

Traffic Surveillance Management Centre



➤ Integrated design, lower combined cost

Lower production cost, great advantage. DSS4004 = manager server+ stream media+ platform software+ OS.

All In One/Integrated design, enable function according to need, flexible combination, wide application scope.

➤ Simple deployment, one-key upgrade

UPnP, for deployment, take apart chassis, plug device to power, set IP, then you can use it. You do not need to debug the system and software, saving time.

One-key upgrade under network connection. Seamless upgrade, store original data without loss. No need of transportation for maintenance.

➤ Safe and stable, highly reliable

Linux OS, anti-virus and anti-Trojan.

As a professional device of surveillance, it passed outage test of 1000 times.

➤ Highly open, good compatibility

Open platform SDK, support partner to develop its business and application.

➤ High expansibility, grouped application, easy expansion

Flexible grouping, easy expansion, via “distributed stack” and “cascading” application, it can increase platform capacity linearly. It is also a strong support to project future expansion.

➤ Platform abundant application, high starting point of creation

Brand new user experience, each application is developed through temper.

Abundant application, close to actual scene and demand, customized development.

High starting point of creation, reserved future expansion and more possibilities.

➤ Firm perform, highly economic

Support single input of 300Mbps, forwarding of 300Mbps, and storage of 100Mbps

Max support 500-ch input / 200-device input for surveillance camera

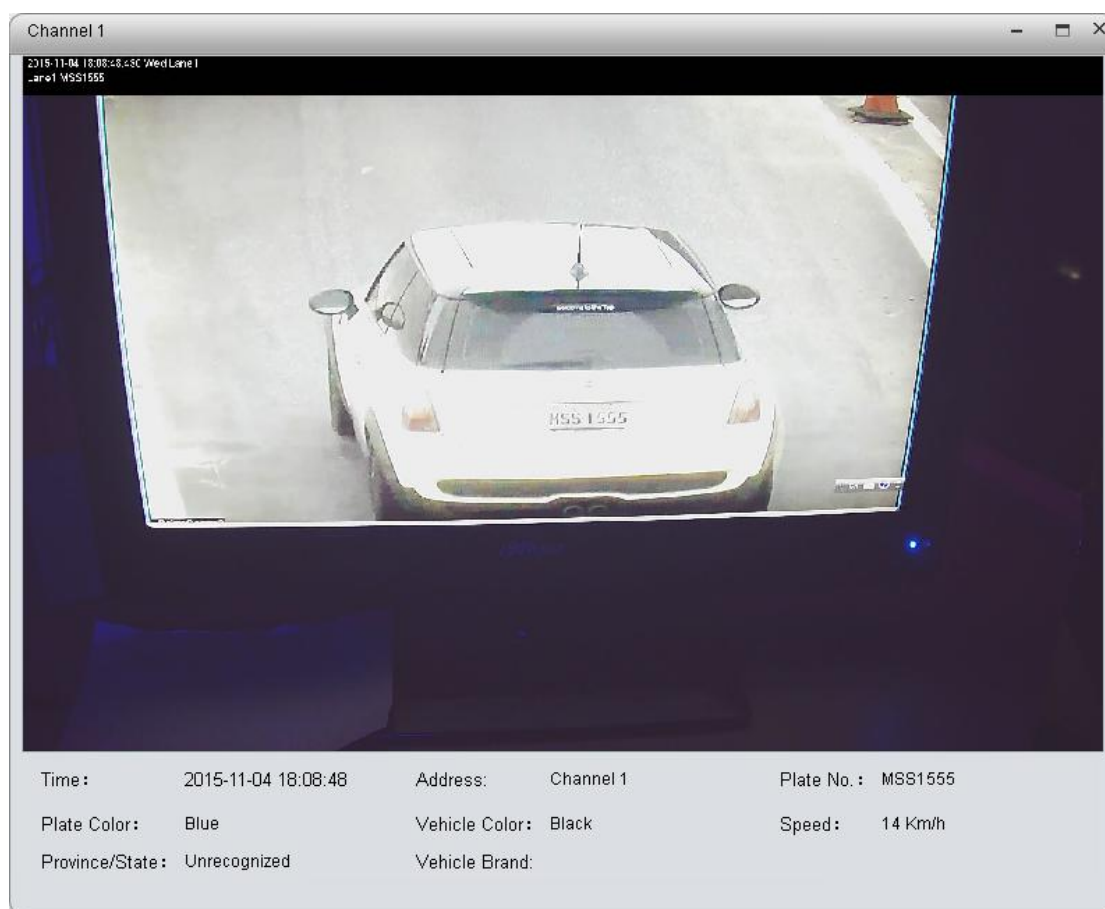
- Max support 50-device input for LPR camera
- Support platform SDK

Specification

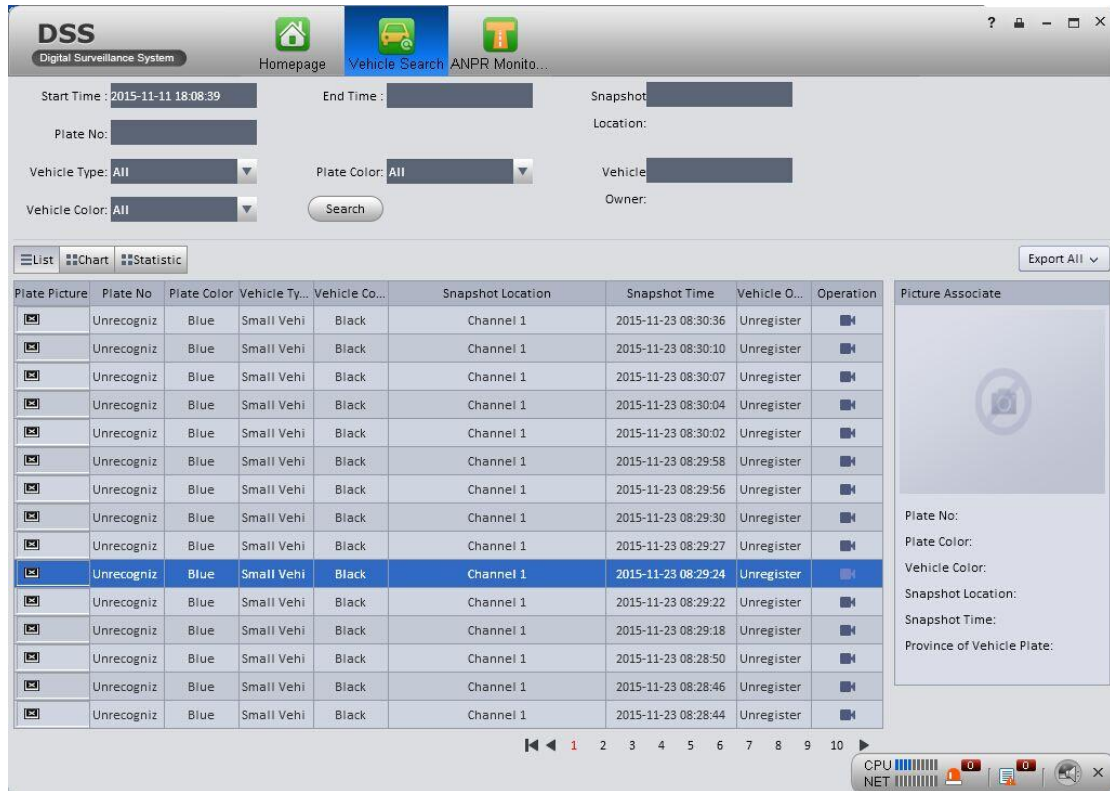
Model		DH-DSS4004-T
System	Main Processor	64 bit 4 core CPU
	OS	Embedded LINUX os
	Power	Hot swap
	Fan	Low noise fan cooling, support 7x24 work
	Memory	4GB server
	Chassis	1.0mm SGCC steel plate
	Local System Config	Network config
Display Port	HDMI	2 HDMI, 1 as network config, 1 as spare.
	VGA	1 VGA, as network config.
Data Management	HDD	2 SATA0, SATA1 standard 3.5 inch hard disk or 4 2.5SATA0, SATA1 2.5 inch hard disk, standard combined with 1 1T hard disk.
	HDD Installation	Built-in 1 1T corporate hard disk.
Port	Network Port	4 100/1000Mbps Ethernet ports
	RS232	Reserved
	RS485	Reserved(reusable with alarm port)
	USB Port	Front: 2 3.0, rear 2 2.0, motherboard loads 1 USB2.0
Other	Power	100V~240V, 47~63Hz
	Consumption	35W~50W (with HDD)
	Working Environment Temperature	0°C~50°C
	Working Environment Humidity	5%~90% (non-condensation)
	Storage Environment Temperature	-20°C~ + 70°C
	Storage Environment Humidity	5%~90% (non-condensation)
	Working Altitude	-60m~3000m

	Dimensions	440 (W) *43.65 (H) *398.7mm
	Weight (without package)	4.5Kg
	Installation Method	Standard 19 inch rack installation
	Secondary Development	Provided platform SDK

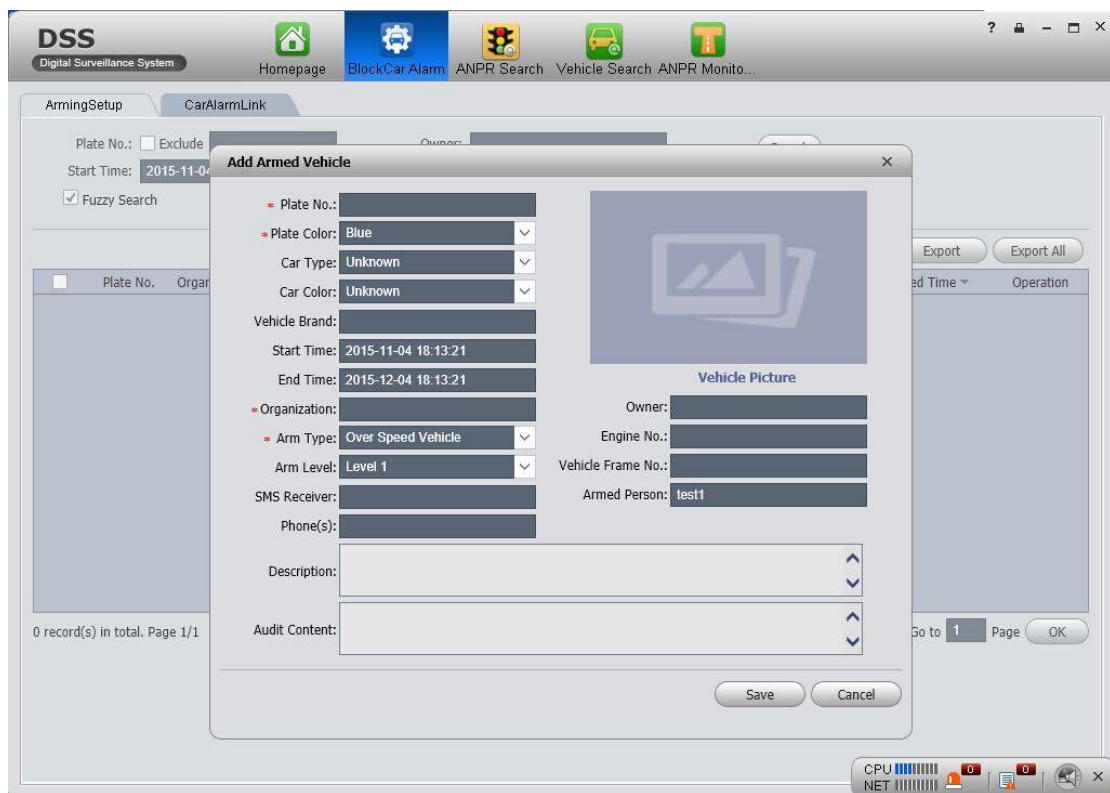
Function:



(1) Manage the ANPR camera form remote, show car plate and color/speed information

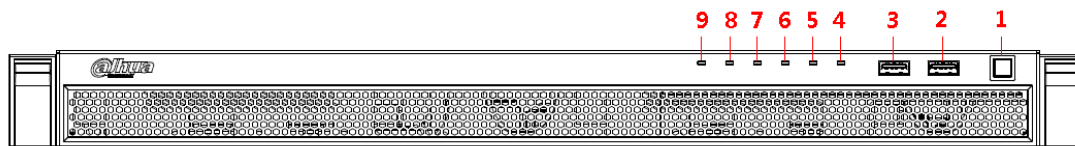


(2) Manage the enforcement system by the way that search the picture and plate of violation vehicle.

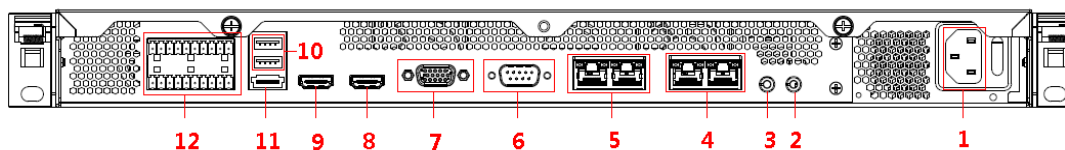


(3) black and white list for vehicle , to help police to search wanted vehicle when needed

Hardware



- | | | |
|-----------------|---------|----------------------|
| 1- Power Button | 4- HDD4 | 7- HDD1 |
| 2- USB3.0 | 5- HDD3 | 8- Alarm Indicator |
| 3- USB3.0 | 6- HDD2 | 9- Network Indicator |



- | | | | |
|--------------------|------------------------|---------------------|---------------------|
| 1- Power Interface | 4- Ethernet Port 1~2 | 7- Video VGA Output | 10- USB2.0x2 |
| 2- Audio Output | 5- Ethernet Port 3~4 | 8- HDMI1 | 11- eSATA Interface |
| 3- Audio Input | 6- RS232 Interconnects | 9- HDMI2 | 12- Alarm In & Out |

Dahua Technology Co., Ltd.

1187BinAn Road, Binjiang District, Hangzhou, China

Tel: +86-571-87688883

Fax: +86-571-87688815

Email:overseas@dahuatech.com

www.dahuatech.com

*Design and specifications are subject to change without notice.

© 2013 Dahua Technology Co., Ltd.