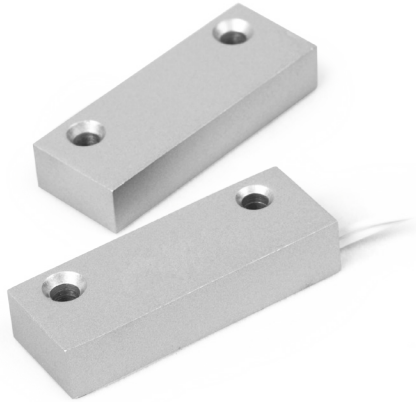


# DH-ARD312

## Iron Door Contact



### Features

- Ideal for residential or commercial use
- Standard gap 40mm
- Support iron door
- Spacers, covers and screws included

### Technical Specification

Detection Range	>40mm
Mounting Type	Surface mount
Relay Output	N.C.
Tamper Switch	-
Dimension	50mmx18mmx10mm
Working Voltage	< DC100V
Operation Current	< 500mA
Working Temperature	-10°C~+50°C
Material	Metal plate